

**YOU
IMAGINE
WE
ENGINEER**

SEJAL
INTELLIGENT
FACADE SOLUTIONS

SEJAL GROUP OF COMPANIES

Sejal Group of companies founded by Shri. Amrut Gada, A Visionary, A Pioneer, A motivator and a first generation entrepreneur founded Sejal Glass House in 1991. Sejal Group of companies have dynamic business verticals under architectural glass processing, reality and infrastructure and general insurance businesses.

WHO WE ARE

At Sejal Intelligent Façade Solutions (SiFS), we're in the business of converting dream structures into reality with our dynamic façade solutions expertise. Our drive to succeed has been by integrated design, manufacturing and execution facilities. We are professionals with more than 32 yrs of experience in the façade industry.

OUR USP

In-House International Standard Glass Processing Unit

11,000 Square meter
Glass Processing Plant Area

1,000+
Supplied Glass Projects
(Domestic & International)

6,00,000 Square meter
Glass Processing Capacity Per Annum

2,400 mm x 4,000 mm
Glass Handling Capacity

Our special focus is on next generation, niche, intelligent, innovative and smart products with bespoke customized system designs that adds life to the structure.

OUR INFRASTRUCTURE

50,000 square feet

Fabrication Manufacturing Area

4,500 square feet

Panels Production Capacity Per Day

2,400 mm x 5,000 mm

Panel Handling Capacity

DESIGN AND TECHNOLOGY

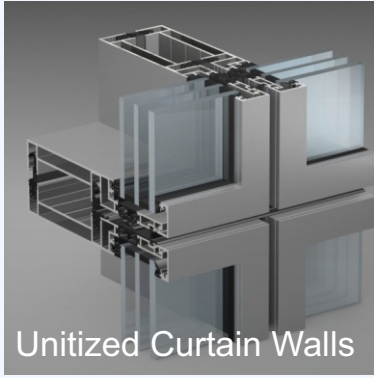
At Sejal Intelligent Façade Solutions, we use advance softwares like Autocad™, Revit™, Advance Steel, Robot Structural Analysis, Formit, Civil 3D, Infra Work to design. Advanced 3D MAX design softwares enable our designers to hit the targeted goal and achieve the futuristic, innovative and dynamic façade designs with optimum use of time. Facade systems with design life of 50 years and building life expectancy of 80 years.

Salient features - No silicon in elevation hence no dust/stain marks/oil streaks, Low system U value to compliment glass of 1.7 w/sqmt k, Higher thermal, acoustic performance, Low air and no water leakage up to 800 pa, wind pressure range of 1 to 4 kpa. Ease in fabrication/installation hence increase in productivity by around 50%, fail proof user friendly systems. First barrier of UV resistant silicon gasket, giving 15 years of extended system warrantee. Cost effective, energy saving (3 years pay back) maximum floor space utilization systems for commercial developments.

PRODUCTS

- Unique decorative screens with varying thickness/depths as per desired spans.
- Continuous bottom channel seamless glass railing systems.
- Aluminium profiled claddings in extrusions for fire proof architectural new aesthetic facades.
- Lift and slide systems for proper sealing of doors/windows in all respects.
- Skylight systems within built water drainage provision.

OUR SYSTEM OFFERINGS



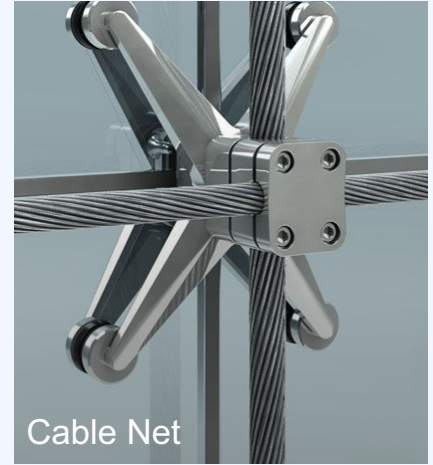
Unitized Curtain Walls



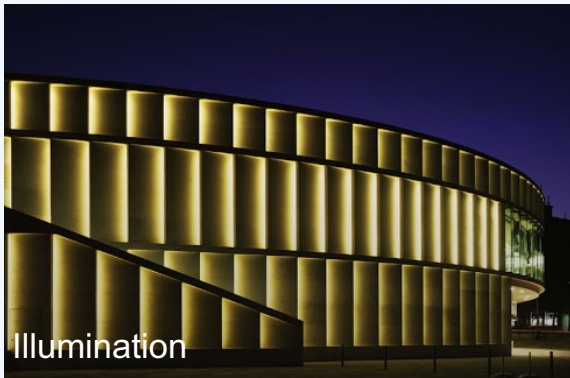
Dynamic Facade



Spider Glazing



Cable Net



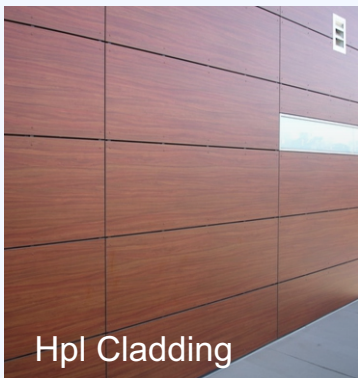
Illumination



Double Skin Facades



Architectural Louvers



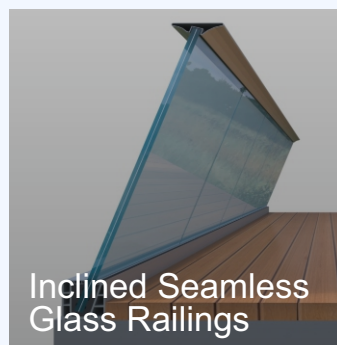
Hpl Cladding



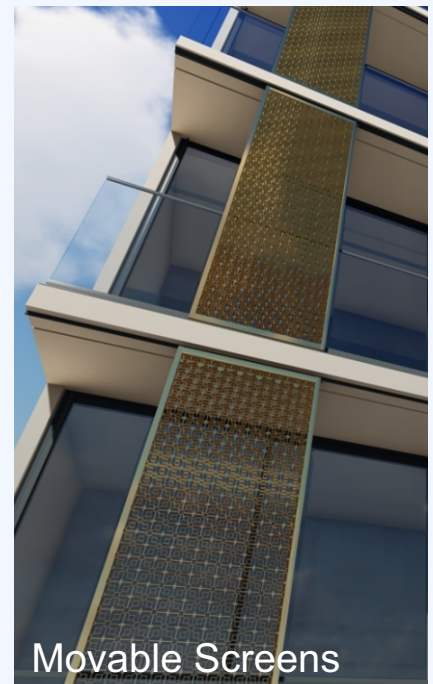
Media Facade



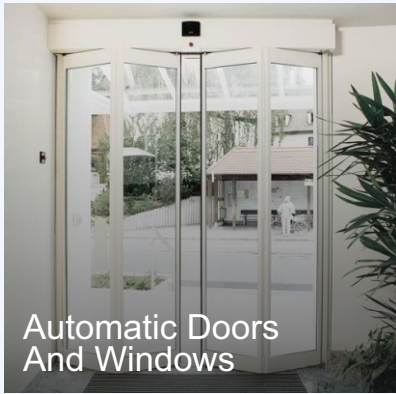
Ms Structure Roofing



Inclined Seamless Glass Railings



Movable Screens



Automatic Doors
And Windows



Extra Tall Sliding Systems



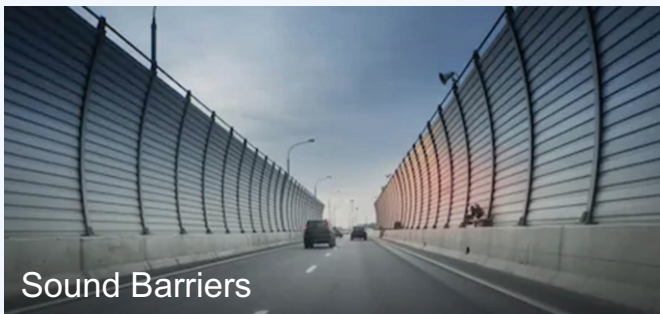
Corian Cladding



Fire Doors



Tensile Fabrics



Sound Barriers



Fire Glazing

MORE SYSTEM OFFERINGS

Facade And Curtain Walls And Louvers

Semi Unitize Curtain Walls | Stick Curtain Walls | Cap Curtain Walls | Glass Fin Bolted Facades | Tension Rod Facades
Skylights And Domes | Canopies | Space Frames | Steel Frames | Steel And Aluminium Diagrids | Vertical Green Walls
Cable Glazing | Terra Cotta Sun Control Systems | Aluminium Sun Control Systems | Aluminium Fins
Aero Foil Louvers | Z Type Louvers.

Rain Screen Claddings

Metal Cladding | Aluminium Composit Cladding | Stone C Ladding | Corian Cladding Systems | Aluminium Door And
Windows | Slim Line Windows | Aluminium Casement Windows | Foldable Doors And Windows | Lift And Slide
Windows | Tilt And Turn Systems | Pivoted Windows | Timber Aluminium Systems.

Interior Esthetics And Safety

Befell Designs | Shower Cubicles | Fire Safety Partitions | Sanitizing Enclosure.

SEJAL
INTELLIGENT
FACADE SOLUTIONS

SEJAL INTELLIGENT FAÇADE SOLUTIONS PVT LTD.

📍 Admin Office: Sejal Encasaa, 3rd Floor, Opp. Bata Showroom,
S.V Road, Kandivali (West), Mumbai - 400 067, INDIA.

☎ +91 022-2866 5100 | 📧 info@sifs.co.in

📍 Factory and R&D Center : S.NO.137 (PART) GHARAT COMPOUND,
NR. KHAN ESTATE, VASAI-VIRAR CITY, PIN: 401208,INDIA